



## Patient's booklet printing

### Print your examinations with film quality for the price of paper

The ETIAM PRI\* software transforms your printer into a DICOM\*\* printer system.

It acts as a **gateway between the workstation and the printer.**

ETIAM PRI makes it possible to print at minimum cost all types of examinations (color, grayscale, US letter, A4, A3 formats) with a film quality.

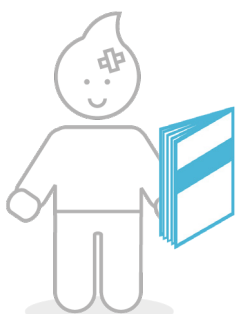
Using it **does not require changing working habits.** The user simply selects images to print on the workstation, and then sends them to the printer via the PRI gateway.

Several devices or consoles can be connected to PRI whatever their type (scanner, MRI, XR...)

**Various configurations** can be defined according to examination types or users' needs (Advanced edition)

ETIAM PRI offers a **variety of print configurations** : image correction settings, addition of the institution's logo, customization of comments and text to print in margins...

ETIAM PRI is connected to the network and installed on a PC with printer drivers

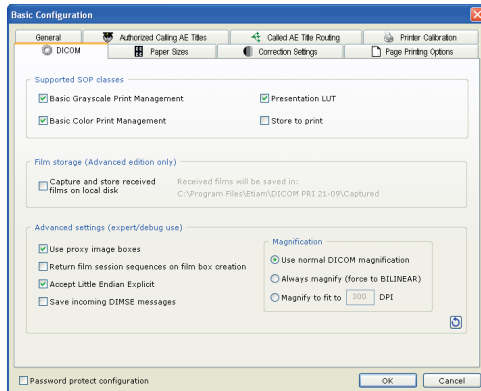


\* PRI : Patient Report Images

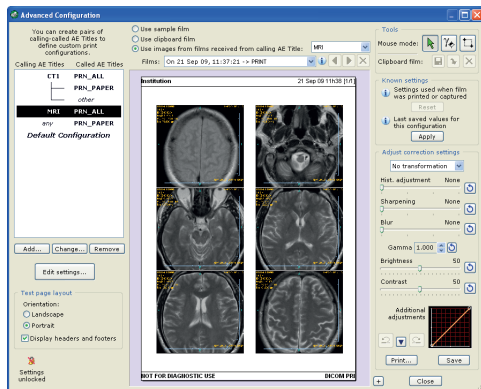
\*\* DICOM : international standard of medical imaging

### Minimum requirements

Processor : 2 GHz  
 RAM: 1 Gb (2 Gb recommended)  
 Operation system : Windows XP, Vista, 7  
 Free disk space for software : 15Mb  
 For data : depending on usage (1 Gb recommended)  
 TCP/IP connexion



Configuration window (Basic)



Configuration window (Advanced)

### Main features

- \* Receiving images for printing through DICOM Print :
  - DICOM films are converted to Windows format
  - Multiple paper formats are supported : A4, A3, etc.
  - Customization of text printed in headers and footers.
  - Addition of a logo in the page header.
  - Several correction settings : gamma, brightness, contrast, histogram adjustment, sharpening and blur
  - Geometric transformation (rotation, flip)
  - A single configuration for all connected modalities
- \* Image printing :
  - ETIAM PRI can be used with more than one printer
  - GSDF configuration files (IHE compliant)
  - 1 scale printing

### ETIAM PRI Includes also the following features :

- Adjusting color rendering.
- Transformation curve in combination with the Image histogram
- \* Automatic enhancement of overlays (measurements, comments)
- \* « Store to print » mode : images are received through the DICOM Store service, and layout and printing are performed automatically
- \* Booklet mode with customizable leading and trailing pages and possible review inclusion

- \* The booklet can be customized using the DICOM attributes contained in received images (patient's name, examination date and type...)
- \* Unlimited number of configuration profiles supported that enable to define combinations of adjustments listed earlier.
- \* Configurations are saved and directly accessible from the workstation (a DICOM entity is declared per profile).
- \* Print job database maintained for counting print jobs on a per-profile basis.
- \* Ability to export and print statistics

### Additional Products

**MARS** – Automatic production of CD/DVD for medical imaging

**ETIAM Web Diffusion** – To share with healthcare

professionals and patients imaging exams via a secure Internet network.

### Interoperability

\* Compatible with all modalities and DICOM imaging sources.

\* Compatible with all printers' models

### Added value

- \* Economic solution compared to film
- \* Broad choice of layout and presentations
- \* Possibility to merge several exams in the same booklet
- \* Automatic or manual integration of reports
- \* Server mode functioning (connexion of several modalities and printers)

**ETIAM Corp.**  
 162 Great Rd, Rear  
 PO Box 2825  
 Acton, MA 01720  
 USA

Toll Free: (877) 384-2662  
 Tel./Fax: (617) 395-5809  
 E-mail: sales-us@etiam.com

[www.etiam.com](http://www.etiam.com)

**ETIAM France**  
 La Palmeraie  
 ZA de la Hallerais  
 11 rue du Bois de Soevvres  
 35770 Vern-sur-Seiche  
 France  
 Tel.: +33 (0)2 99 14 33 88  
 Fax: +33 (0)2 99 14 33 80  
 E-mail: sales-fr@etiam.com

**ETIAM Asia**  
 Bld 6, No. 1279, Zhongshan  
 West Road  
 200051 Shanghai  
 Office 251  
 China  
 Tel.: +86 0215-116-8268  
 Fax: +86 1561-830-8300  
 E-mail: sales-cn@etiam.com

Learn more on

[www.etiam.com](http://www.etiam.com)

This document is not contractual and this offer is subject to changes without prior notice.  
 All trademarks and registered trademarks herein are the property of their respective owners.